



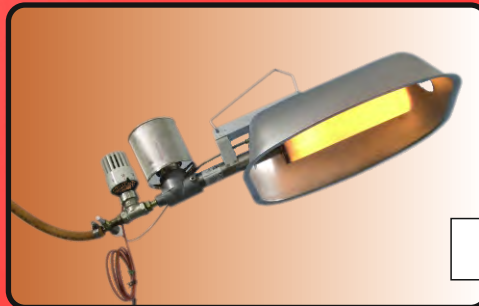
ALKE

Heating Technology



Ceramic

Type 81



Stainless Steel

AP 2



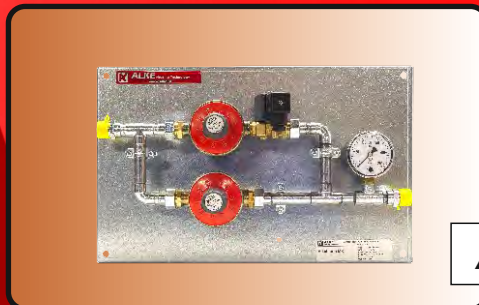
Stainless Steel

Global



Canope

Megasun



Regulation

AlkeTherm





81-FTi





CERAMIC series

gas brooders

The ALKE ceramic gasbrooders are a very reliable solution for heating in live-stock environments. Not only poultry but also pigs- and cattle housing can be very well heated with these gasbrooders.

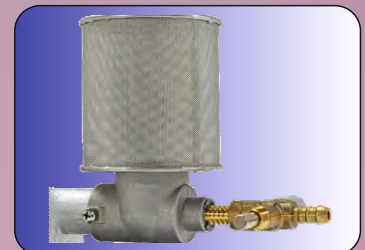
Although the ALKE ceramic gasbrooder is a classic design, it has proofed to be very sustainable and reliable.

41-F / 61-F / 81-F

Dust Filter

Thermo Electric Safety Valve

Model	Gas	P (mbar)	Cap. (kW)	Consumption	CE
41-F	G20 Natural	25 - 50	1,35 - 1,90	0,18 m3/h	No
	G25 Natural	25 - 50	1,35 - 1,90	0,21 m3/h	No
	G31 Propane	50 - 150	0,90 - 1,60	115 gr/h	Yes
	G31 Propane	500 - 1400	1,10 - 1,85	132 gr/h	No
Model	Gas	P (mbar)	Cap. (kW)	Consumption	CE
61-F	G20 Natural	25 - 50	1,60 - 2,30	0,26 m3/h	Yes
	G25 Natural	25 - 50	1,60 - 2,30	0,22 m3/h	Yes
	G31 Propane	50 - 150	1,55 - 2,70	193 gr/h	No
	G31 Propane	500 - 1400	1,73 - 2,90	207 gr/h	No
Model	Gas	P (mbar)	Cap. (kW)	Consumption	CE
81-F	G20 Natural	25 - 50	2,20 - 3,20	0,30 m3/h	Yes
	G25 Natural	25 - 50	2,30 - 3,30	0,30 m3/h	Yes
	G31 Propane	30	2,75	195 gr/h	No
	G31 Propane	50	3,00	215 gr/h	No
	G31 Propane	50 - 150	1,70 - 3,00	215 gr/h	Yes
	G31 Propane	350 - 1400	1,80 - 3,60	260 gr/h	Yes



81-FT / 81-FTi

Dust Filter

Thermo Electric Safety Valve

Thermostat Capilar

Model	Gas	P (mbar)	Cap. (kW)	Consumption	CE
81-FT	G31 Propane	150	1,70 - 3,00	215 gr/h	Yes
	G31 Propane	1400	1,80 - 3,60	260 gr/h	Yes





AP2-FT



AP2-F





AP series

Stainless Steel gasbrooders



Model	Gas	P (mbar)	Cap. (kW)	Consumption	CE
AP-1-F	G31 Propane	30 - 1400	0,16 - 1,10	79 gr/h	Yes
	G31 Propane	5 - 200	0,19 - 1,25	89 gr/h	No
AP-1-FT	G31 Propane	1400	0,50 - 1,10	79 gr/h	Yes

Dust Filter - Thermo Electric



Model	Gas	P (mbar)	Cap. (kW)	Consumption	CE
AP-2-F	G20 Natural	25 - 50	2,45 - 3,50	0,35 m3/h	Yes
	G20 Natural	10 - 300	0,90 - 5,10	0,48 m3/h	Yes
	G25 Natural	25 - 50	2,45 - 3,50	0,39 m3/h	Yes
	G31 Propane	30 - 300	1,60 - 5,00	360 gr/h	Yes
	G31 Propane	20 - 1400	0,65 - 5,60	400 gr/h	Yes

Dust Filter - Thermo Electric



Model	Gas	P (mbar)	Cap. (kW)	Consumption	CE
AP-2-FT / FTi	G20 Natural	50	2,45 - 3,50	0,35 m3/h	Yes
	G20 Natural	300	0,90 - 5,10	0,48 m3/h	Yes
	G25 Natural	50	2,45 - 3,50	0,39 m3/h	Yes
	G31 Propane	300	1,60 - 5,00	360 gr/h	Yes
	G31 Propane	1400	1,20 - 5,60	400 gr/h	Yes

Dust Filter - Thermo Electric - Thermostat (Capilar)



Model	Gas	P (mbar)	Cap. (kW)	Consumption	CE
AP-3-F	G31 Propane	25 - 310	0,48 - 1,70	121 gr/h	No
	G31 Propane	20 - 1400	0,21 - 1,95	140 gr/h	Yes
AP-3-FT	G31 Propane	310	0,48 - 1,70	121 gr/h	No
	G31 Propane	1400	0,75 - 1,95	140 gr/h	Yes

Dust Filter - Thermo Electric



GLOBAL-10



GLOBAL5-T

Global has been designed with a special shape. The spherical gasburner emits infrared rays into an even round structure, radiating heat evenly on the brooding area.

The Global has a double gasburner which combusts dust and without leaving any residue in the small burner.

However, in case of very dusty environments you can choose the "ZF" option which has two dustfilters mounted.

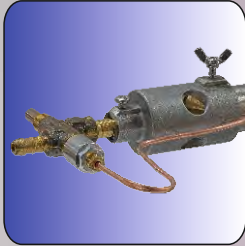
- Two spherical gasburners of stainless, and heat resistance steel.
- Optional double airfilter
- Stainless steel reflector
- Spherical gasburner that sends all generated heat toward the ground
- Optional individual capillary thermostatic valve, registering temperature on floor level.
- No electricity required
- Uniform temperature, without drastic variations
- Better distribution of the heat without obstacles.





GLOBAL series

Stainless Steel Gas Brooders



Model	Gas	P (mbar)	Cap. (kW)	Consumption	CE
Global-5	G20 Natural	20 - 300	0,63 - 4,80	0,46 m3/h	No
	G31 Propane	20 - 350	0,60 - 5,00	360 gr/h	No
	G31 Propane	20 - 1400	0,65 - 5,50	400 gr/h	Yes
Global-10	G20 Natural	50 - 300	3,60 - 8,80	0,84 m3/h	No
	G31 Propane	20 - 1400	1,15 - 9,50	680 gr/h	Yes
	G31 Propane	20 - 2000	0,80 - 8,80	630 gr/h	No

Basic model, contains safety device and thermo couple



Model	Gas	P (mbar)	Cap. (kW)	Consumption	CE
Global-5-2F	G31 Propane	20 - 1400	0,65 - 5,50	400 gr/h	Yes
Global-10-2F	G31 Propane	20 - 1400	1,00 - 8,60	615 gr/h	Yes
	G31 Propane	20 - 2000	0,80 - 8,80	630 gr/h	No

Equipped with dual dustfilters



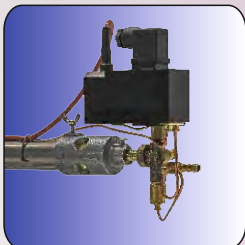
Model	Gas	P (mbar)	Cap. (kW)	Consumption	CE
Global-5-T / Ti	G20 Natural	300	0,63 - 4,80	0,46 m3/h	No
	G31 Propane	350	0,60 - 5,00	360 gr/h	No
	G31 Propane	1400	1,20 - 5,50	400 gr/h	Yes
Global-10-T / Ti	G31 Propane	1400	1,90 - 9,50	680 gr/h	Yes
	G31 Propane	2000	1,40 - 8,80	630 gr/h	No

Equipped with independent manual thermostat



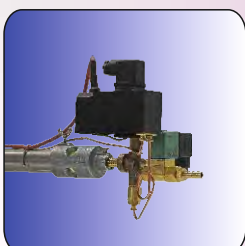
Model	Gas	P (mbar)	Cap. (kW)	Consumption	CE
Global-5-S	G20 Natural	300	0,63 / 4,80	0,46 m3/h	No
	G31 Propane	350	0,60 / 5,00	360 gr/h	No
	G31 Propane	1400	1,20 / 5,50	400 gr/h	Yes
Global-10-S	G31 Propane	1400	1,90 / 9,50	680 gr/h	Yes
	G31 Propane	2000	1,40 / 8,80	630 gr/h	No

Equipped with solenoid valve for High / Low mode



Model	Gas	P (mbar)	Cap. (kW)	Consumption	CE
Global-5-Ei	G20 Natural	300	0,00 - 4,80	0,46 m3/h	No
	G31 Propane	350	0,00 - 5,00	360 gr/h	No
	G31 Propane	1400	0,00 - 5,50	400 gr/h	Yes
Global-10-Ei	G31 Propane	1400	0,00 - 9,50	680 gr/h	Yes
	G31 Propane	2000	0,00 - 8,80	630 gr/h	No

Equipped with Electronic Ignition Device for On / Off control.



Model	Gas	P (mbar)	Cap. (kW)	Consumption	CE
Global-5-SEi	G31 Propane	1400	0,00 / 1,20 / 5,50	0 / 80 / 400 gr/h	Yes
Global-10-SEi	G31 Propane	1400	0,00 / 1,90 / 9,50	0 / 136 / 680 gr/h	Yes

Equipped with Solenoid valve and Electronic Ignition Device for On/Off/High/Low.



MEGASUN 12-EI



Megasun series

Megasun -12 - Pt

An individual, non-electric, fully automatic ON/OFF control with integral thermostat, which operates on millivolts generated by the pilot. No electrical supply is needed. Integral thermostat features a wide temperature range for easy adjustment. 100% gas safety shut-off valve.

Megasun -12 - Ps

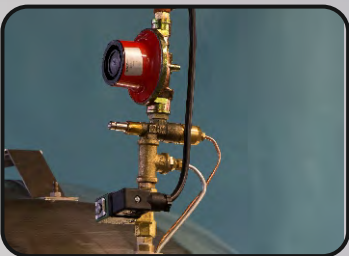
For single or multi-zone installations using central or multiple thermostats, available in 24V or 230V version. The 24-volt AC, zone-type control also can operate on DC voltage as a back up. The gas valve includes a built-in regulator. A 24V or 230V power supply is required. Brooder can be operated by a thermostat, computer or an environmental controller. 100% gas safety shut-off valve.

Megasun - 12 - Ei

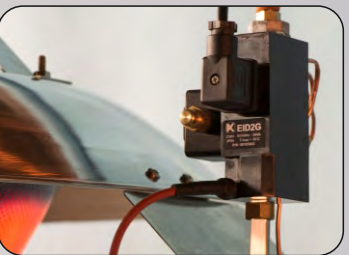
Designed for single or multi-zone installations using one or more thermostats. A Zone Control is required to provide a 230-Volt power supply to each brooder. The burner is controlled with a Electronic Ignition device (Ei) switch, which is designed to provide 100 percent gas shut off of the main valve in the event that the main burner flame is not sensed.



Model	Gas	P (mbar)	Cap. (kW)	Consumption	CE
Megasun-12-Pt	G20 Natural	20 - 50	12,40	1,20 m3/h	Yes
	G25 Natural	20 - 50	12,40	1,40 m3/h	Yes
	G25.3 Natural	20 - 50	12,40	1,35 m3/h	Yes
	G30 Butane	30 - 50	12,40	900 gr/h	Yes
	G31 Propane	30 - 50	12,40	890 gr/h	Yes



Model	Gas	P (mbar)	Cap. (kW)	Consumption	CE
Megasun-12-Ps	G20 Natural	20 - 50	12,40	1,20 m3/h	Yes
	G25 Natural	20 - 50	12,40	1,40 m3/h	Yes
	G25.3 Natural	20 - 50	12,40	1,35 m3/h	Yes
	G30 Butane	30 - 50	12,40	900 gr/h	Yes
	G31 Propane	30 - 50	12,40	890 gr/h	Yes

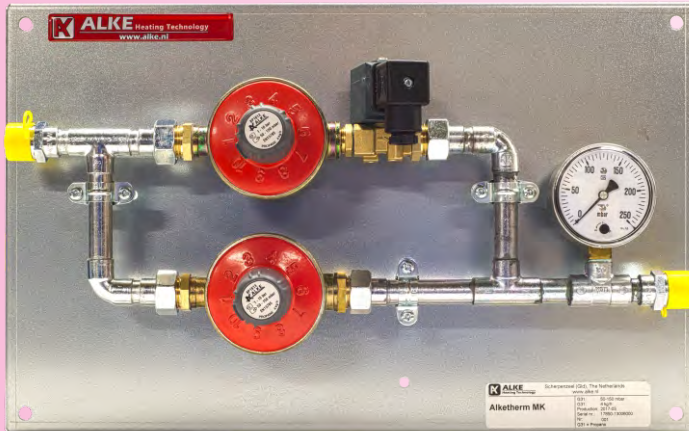


Model	Gas	P (mbar)	Cap. (kW)	Consumption	CE
Megasun-12-Ei	G20 Natural	20 - 80	12,00	1,15 m3/h	Yes
	G25 Natural	20 - 80	12,00	1,35 m3/h	Yes
	G25.3 Natural	20 - 80	12,00	1,30 m3/h	Yes
	G30 Butane	37 - 100	12,00	880 gr/h	Yes
	G31 Propane	37 - 100	12,00	860 gr/h	Yes

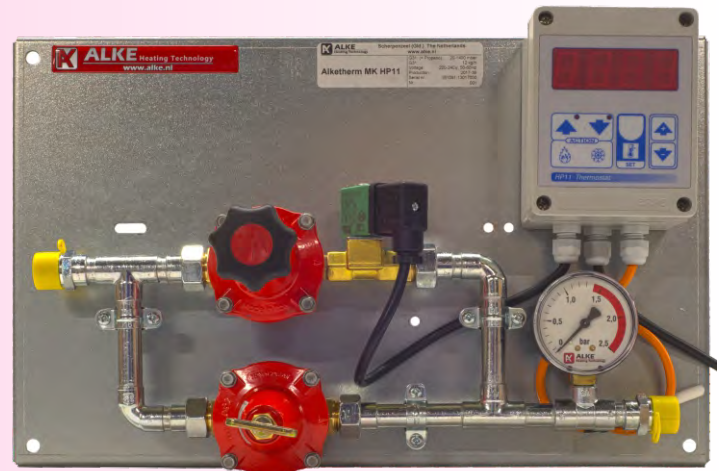


Regulation equipment

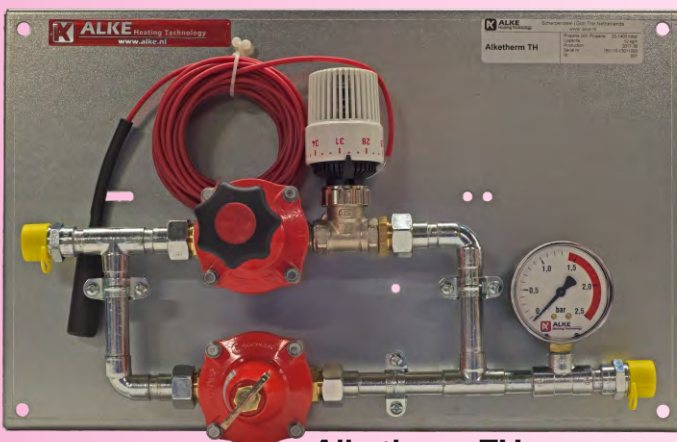
AlkeTherm



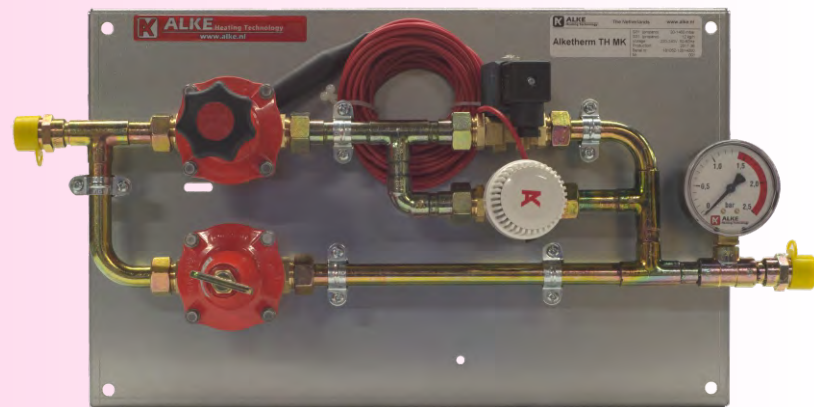
Alketherm MK1



Alketherm MK1 HP11



Alketherm TH



Alketherm MK1 TH

Model description

- Alketherm MK1:** - Gas control panel with a solenoid valve MK1 for the selection of high or low gas supply to the heaters. An external thermostat or temperature computer is needed to operate the valve MK1 to maintain the temperature requested.
- Alketherm MK1 Hp11:** - Gas control panel with a solenoid valve MK1 for the selection of high or low gas supply to the heaters. A thermostat HP11 is integrated to operate the valve MK1 to maintain the temperature requested.
- Alketherm TH:** - Gas control panel with an independent mechanical thermostat TH to maintain the temperature requested. No electricity needed. Gas supply to the heaters can be regulated at any position between high to low.
- Alketherm MK1 TH:** - Gas control panel with a solenoid valve MK1 for the selection of high or low gas supply to the heaters. An external thermostat or temperature computer is needed to operate the valve MK1 to maintain the temperature requested. A back-up mechanical thermostat TH is available to be able to maintain temperature in case of an electric power failure.

Pressure Regulators

GPC

Gas Pressure Controller

With pressure meter, modulating servo motor, 0 -10V and manual override



GPC 30 - 1400 mBar



GPC 50 - 150 mBar



GPC 20 - 300 mBar

NEW

GLOBAL 10-2FSEi



With solenoid valve and electronic ignition

	High	Low	Off
Capacity (kW)	9.5	1.9	0.0
Gas consumption (gr/h)	680	136	0



ALKE BV - Industrielaan 11a - 3925 BD Scherpenzeel - The Netherlands

☎ +31 (0)33 277 3824 📠 +31 (0)33 277 3080 ✉ info@alke.nl

🌐 www.alke.nl